
Edgeline Configuration

1. Add Device

Enable
Name:
Device Type:
 Device Model:
Unit Number:
Tag Write Type:
Description:
 Add device name as prefix to IO tags

TCP/IP
IP/Domain:
Port Number:

Extention Properties
 Device Address (if other than Unit Number):
Device Broadcast [I AM] Time (second):
Polling Cycle:
Device Instance #:
Max Property/ Request:
Synchronize Time at(Ex. 23:50:00):

Device Type: BACnet IP

Unit Number: No meaning.

IP and Port: The IP and the port of BACnet server.

Device Broadcast [I AM] Time (second): If COV (Change of Value) reporting is enabled in the server, configure the Device broadcast I AM to the frequency the device transmits it's I AM. COV means the device responds only when there is a change of value and the I AM is used to mark the device as good. If use I AM broadcast, and the I AM message is not received within the period, the device will be marked as failed.

Polling Cycle: It is the Multiple of TCP port scan time. For example, Polling Cycle = 1 means

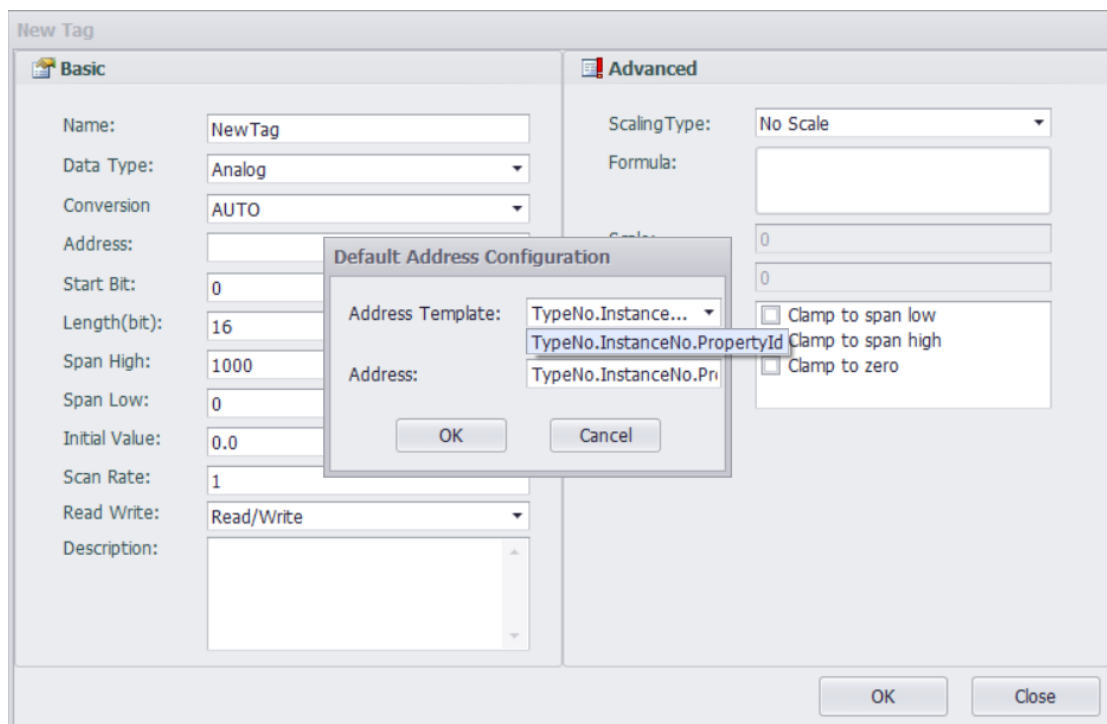
the device is polled at the TCP port scan time. Polling Cycle =2 means the device is polled at 2*scan time.

Device Instance #: Device instance number of the BACNet server.

Max Property/Request: 0=Read 70 tags each poll, 1=Read 1 tag per poll, 2=Read 2 tags each poll, etc. Edgelinek uses a deterministic request size based generated at download. So, you will probably have to experiment with your devices to determine the Max Read Property size.

Synchronize Time at (Ex. 23:50:00) : Configure the Synchronize Time to some other time of Day.

2. Add Tags



The address format is: TypeNo.InstanceNo.PropertyId.

TypeNo. : Our driver support Analog Input, Analog Output, Analog Value, Binary Input, Binary Output and Binary Value.

Type	TypeNo.
Analog Input	0
Analog Output	1
Analog Value	2
Binary Input	3
Binary Output	4
Binary Value	5

InstanceNo.: The Index of the tag.

PropertyId: You can find it in BACNet protocol. For example, present value is 85.

Address Example:

To read the **Present Value** of Tags, some examples of Addresses are:

Type	TypeNo.
AI_2	0.2.85
AO_2	1.2.85
AV_2	2.2.85
BI_2	3.2.85
BO_2	4.2.85
BV_2	5.2.85

3. Error Code

Tag	Value	Quality	Timestamp
NewDevice:right	31255.20	Good	2020-11-04T01:15:17(+08:00)
NewDevice:wrong_instanceNo	0.00	b01fH	1970-01-01T08:00:00(+08:00)
NewDevice:wrong_propertyID	0.00	b020H	1970-01-01T08:00:00(+08:00)

Error code (Decimal)	Error code (Hex)	Meaning
000	0x0	No error
009	0x9	Invalid data type
020	0x14	No space to write property
027	0x1b	Read access denied
031	0x1f	Unknown object
032	0x20	Unknown property
037	0x25	Value out of range
040	0x28	Write access denied
042	0x2a	Invalid array index
047	0x2f	Datatype not supported
048	0x30	Duplicate name
049	0x31	Duplicate object id
050	0x32	Property is not an array
051	0x33	Abort buffer overflow
052	0x34	Abort invalid apdu in this state
053	0x35	Abort preempted by higher priority task
054	0x36	Abort segmentation not supported
055	0x37	Abort proprietary
056	0x38	Abort other
059	0x3b	Reject buffer overflow
060	0x3c	Reject inconsistent parameters
061	0x3d	Reject invalid parameter data type
062	0x3e	Reject invalid tag
063	0x3f	Reject missing required parameter
064	0x40	Reject parameter out of range
065	0x41	Reject too many arguments
066	0x42	Reject undefined enumeration
067	0x43	Reject unrecognized service
068	0x44	Reject proprietary
069	0x45	Reject other
080	0x50	Parameter out of range
123	0x7b	Abort apdu too long

124	0x7c	Abort application exceeded reply time
125	0x7d	Abort out of resources
126	0x7e	Abort tsm timeout
127	0x7f	Abort window size out of range
256	0x100	Loss of port connection
257	0x101	Header timeout error
258	0x102	Data timeout error
259	0x103	NPDU Timeout error
260	0x104	Header CRC error
261	0x105	Data CRC error
262	0x106	Non-NPDU message error
263	0x107	Timeout error
264	0x108	Serial port error
265	0x109	Invalid Write Property Error
266	0x10a	Invalid Read Property Error
267	0x10b	No valid read data
268	0x10c	Unsupported Frame Type
269	0x10d	Error in the MS/TP Network
270	0x10e	Unknown Data Type to write
271	0x10f	Invalid Destination MAC Address
272	0x110	Invalid Source MAC Address
273	0x111	Invalid Header Information
274	0x112	Unable to get a valid Invoke ID